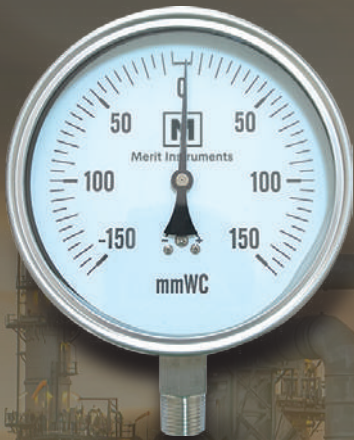


INDUSTRIAL APPLICATION PRODUCTS



MERIT INSTRUMENTS INDUSTRIAL APPLICATION PRODUCTS

Merit has carefully curated a line of pressure and temperature instrumentation designed to provide exceptional performance for most industrial applications. To compliment these instruments, we also offer an extensive range of accessories such as diaphragm seals, pressure snubbers, thermowells and more.

The items contained in this brochure are just small sampling of Merit's extensive industrial product line and our experienced instrumentation experts are available to offer you custom designed solutions for YOUR industrial instrumentation requirements...just ask and let Merit show you what we can do.

For additional product information, visit: www.meritstruments.com, email us at: info@meritstruments.com, or give us a call at 512-649-7144.



PPS SOLID FRONT PROCESS GAUGE

Description & Features:

- Designed for applications that require a durable solid-front, blow-out back safety case gauge that is field fillable (glycerin).
- PET safety case with 316L stainless steel tube & socket.
- Comes standard ready to be filled with glycerin in the field if required – no additional kit is required.
- 7-year warranty*
**Refer to Merit Instruments warranty page for full warranty details.*

Specifications:

- Dial: 4.5" (115mm).
- Case: PET (Polyethylene terephthalate).
- Lens: PC standard, laminated safety glass available upon request.
- Ring: Polypropylene.
- Socket: 316L stainless steel.
- Bourdon Tube: 316L stainless steel.
- Movement: Stainless steel.
- Connection: ¼" NPT or ½" NPT.
- Dial: Aluminum, painted white with black and red markings for dual scale ranges, and black markings for single scale ranges.
- Pointer: Aluminum, micrometer adjustable, painted black.
- Working Pressure: Maximum 75% of full scale value.
- Accuracy: +/-0.5% of full scale. ASME B40.1 Grade 2A.
- IP Rating: IP65



Applications:

- Suitable for applications with process media that is not corrosive to 316L stainless steel
- Typical applications include: Oil refineries, Petrochemical facilities and processing where a 0.5% accuracy solid-front, blow-out back connection safety case for operator safety is required.

Order Codes:

4.5" PET Case, SS internals 1/4" NPT bottom connection Dry but Glycerine fillable P = Pressure Gauge P = Turret case S = 316 Stainless Steel 2 = 1/4" NPT 100 Codes - psi only 200 Codes - psi/Bar 300 Codes - psi/kPa	PSI Range	Code	PSI/Bar	Code	PSI/kPa	Code
	Vacuum	PPS2100	Vacuum/Bar	PPS2200	Vacuum/psi	PPS2300
	0-15	PPS2101	0-15 psi/Bar	PPS2201	0-15 psi/kPa	PPS2301
	0-30	PPS2102	0-30 psi/Bar	PPS2202	0-30 psi/kPa	PPS2302
	0-60	PPS2103	0-60 psi/Bar	PPS2203	0-60 psi/kPa	PPS2303
	0-100	PPS2104	0-100 psi/Bar	PPS2204	0-100 psi/kPa	PPS2304
	0-160	PPS2105	0-160 psi/Bar	PPS2205	0-160 psi/kPa	PPS2305
	0-200	PPS2106	0-200 psi/Bar	PPS2206	0-200 psi/kPa	PPS2306
	0-300	PPS2107	0-300 psi/Bar	PPS2207	0-300 psi/kPa	PPS2307
	0-600	PPS2108	0-600 psi/Bar	PPS2208	0-600 psi/kPa	PPS2308
	0-1000	PPS2109	0-1000 psi/Bar	PPS2209	0-1000 psi/kPa	PPS2309
	0-1500	PPS2110	0-1500 psi/Bar	PPS2210	0-1500 psi/kPa	PPS2310
	0-2000	PPS2111	0-2000 psi/Bar	PPS2211	0-2000 psi/kPa	PPS2311
	0-3000	PPS2112	0-3000 psi/Bar	PPS2212	0-3000 psi/kPa	PPS2312
0-5000	PPS2113	0-5000 psi/Bar	PPS2213	0-5000 psi/kPa	PPS2313	

4.5" PET Case, SS internals 1/2" NPT bottom connection Dry but Glycerine fillable P = Pressure Gauge P = Turret case S = 316 Stainless Steel 3 = 1/2" NPT 100 Codes - psi only 200 Codes - psi/Bar 300 Codes - psi/kPa	PSI Range	Code	PSI/Bar	Code	PSI/kPa	Code
	Vacuum	PPS3100	Vacuum/Bar	PPS3200	Vacuum/psi	PPS3300
	0-15	PPS3101	0-15 psi/Bar	PPS3201	0-15 psi/kPa	PPS3301
	0-30	PPS3102	0-30 psi/Bar	PPS3202	0-30 psi/kPa	PPS3302
	0-60	PPS3103	0-60 psi/Bar	PPS3203	0-60 psi/kPa	PPS3303
	0-100	PPS3104	0-100 psi/Bar	PPS3204	0-100 psi/kPa	PPS3304
	0-160	PPS3105	0-160 psi/Bar	PPS3205	0-160 psi/kPa	PPS3305
	0-200	PPS3106	0-200 psi/Bar	PPS3206	0-200 psi/kPa	PPS3306
	0-300	PPS3107	0-300 psi/Bar	PPS3207	0-300 psi/kPa	PPS3307
	0-600	PPS3108	0-600 psi/Bar	PPS3208	0-600 psi/kPa	PPS3308
	0-1000	PPS3109	0-1000 psi/Bar	PPS3209	0-1000 psi/kPa	PPS3309
	0-1500	PPS3110	0-1500 psi/Bar	PPS3210	0-1500 psi/kPa	PPS3310
	0-2000	PPS3111	0-2000 psi/Bar	PPS3211	0-2000 psi/kPa	PPS3311
	0-3000	PPS3112	0-3000 psi/Bar	PPS3212	0-3000 psi/kPa	PPS3312
0-5000	PPS3113	0-5000 psi/Bar	PPS3213	0-5000 psi/kPa	PPS3313	
0-10000	PPS3114	0-10000 psi/Bar	PPS3214	0-10000 psi/kPa	PPS3314	
0-15000	PPS3115	0-15000 psi/Bar	PPS3215	0-15000 psi/kPa	PPS3315	

PSX SERIES ALL STAINLESS STEEL SHOCK-X™ VIBRATION FREE PRESSURE GAUGE

Description & Features:

- All stainless steel vibration free design - with NO GLYCERIN filling required!
- Suitable for applications where vibration is present and an all SS gauge is required, but liquid filling is unsuitable.
- No fill Shock-X™ movement prevents pointer flutter & movement gear damage in applications with vibration.
- Other options available upon request.
- Lens: Polycarbonate (PC) standard. Laminated safety glass available.
- 7-year warranty*



Specifications:

- Dial Sizes: 2.5" and 4" dial sizes standard, other sizes available upon request.
- Dial Material: Aluminum with black markings (single scale) or black and red markings (dual scale).
- Case: 304 Stainless Steel standard. Optional 316 Stainless Steel case and ring available.
- Tube and Socket: All 316L Stainless Steel bourdon tube and socket.
- Lens: Polycarbonate (PC). Laminated safety glass available upon request.
- Connection Size: 1/4" NPT standard on 2.5" dial sizes, 1/2" NPT available on all 4" and larger dial sizes. BSP, BSPT and other optional threads available.
- Enclosure Rating: IP66/NEMA 4X.
- Accuracy: +/-1.6% FSA for 2.5" dial, +/-1% FSA for 4" and larger dial sizes.
- Recommended Maximum Operating Pressure: 60% of full-scale range.
- Operating Process Temperature: -4/150F, -20/65 C.
- Ambient Temperature: -40/250 F, -40/120 C.
- Ranges: Available in single scale or dual scales as required. Other ranges available upon request.
- Customization: Available upon request.

*Refer to Merit Instruments warranty page for full warranty details.

Order Codes:

2.5" SS 1/4" NPT Bottom Shock-X™ movement P = Pressure Gauge S = 316 Stainless Steel X = Shock-X™ Movement A = 2.5" Dial 2 = 1/4" NPT 100 Codes - psi only 200 Codes - psi/Bar 300 Codes - psi/kPa	PSI Ranges	Code	PSI/Bar Ranges	Code	PSI/kPa Ranges	Code
	Vacuum	PSXA2100	Vacuum/Bar	PSXA2200	Vacuum	PSXA2300
	0-15	PSXA2101	0-15 psi/Bar	PSXA2201	0-15 psi/kPa	PSXA2301
	0-30	PSXA2102	0-30 psi/Bar	PSXA2202	0-30 psi/kPa	PSXA2302
	0-60	PSXA2103	0-60 psi/Bar	PSXA2203	0-60 psi/kPa	PSXA2303
	0-100	PSXA2104	0-100 psi/Bar	PSXA2204	0-100 psi/kPa	PSXA2304
	0-160	PSXA2105	0-160 psi/Bar	PSXA2205	0-160 psi/kPa	PSXA2305
	0-200	PSXA2106	0-200 psi/Bar	PSXA2206	0-200 psi/kPa	PSXA2306
	0-300	PSXA2107	0-300 psi/Bar	PSXA2207	0-300 psi/kPa	PSXA2307
	0-600	PSXA2108	0-600 psi/Bar	PSXA2208	0-600 psi/kPa	PSXA2308
	0-1000	PSXA2109	0-1000 psi/Bar	PSXA2209	0-1000 psi/kPa	PSXA2309
	0-1500	PSXA2110	0-1500 psi/Bar	PSXA2210	0-1500 psi/kPa	PSXA2310
	0-2000	PSXA2111	0-2000 psi/Bar	PSXA2211	0-2000 psi/kPa	PSXA2311
	0-3000	PSXA2112	0-3000 psi/Bar	PSXA2212	0-3000 psi/kPa	PSXA2312
	0-5000	PSXA2113	0-5000 psi/Bar	PSXA2213	0-5000 psi/kPa	PSXA2313
	0-10000	PSXA2114	0-10000 psi/Bar	PSXA2214	0-10000 psi/kPa	PSXA2314

2.5" SS 1/4" NPT Back Shock-X™ movement P = Pressure Gauge S = 316 Stainless Steel X = Shock-X™ Movement B = Back Connection A = 2.5" Dial 2 = 1/4" NPT 500 Codes = psi only back connection 600 Codes = psi/Bar back connection 700 Codes = psi/kPa back connection	PSI Ranges	Code	PSI/Bar Ranges	Code	PSI/kPa Ranges	Code
	Vacuum	PSXBA2500	Vacuum/Bar	PSXBA2600	Vacuum	PSXBA2700
	0-15	PSXBA2501	0-15 psi/Bar	PSXBA2601	0-15 psi/kPa	PSXBA2701
	0-30	PSXBA2502	0-30 psi/Bar	PSXBA2602	0-30 psi/kPa	PSXBA2702
	0-60	PSXBA2503	0-60 psi/Bar	PSXBA2603	0-60 psi/kPa	PSXBA2703
	0-100	PSXBA2504	0-100 psi/Bar	PSXBA2604	0-100 psi/kPa	PSXBA2704
	0-160	PSXBA2505	0-160 psi/Bar	PSXBA2605	0-160 psi/kPa	PSXBA2705
	0-200	PSXBA2506	0-200 psi/Bar	PSXBA2606	0-200 psi/kPa	PSXBA2706
	0-300	PSXBA2507	0-300 psi/Bar	PSXBA2607	0-300 psi/kPa	PSXBA2707
	0-600	PSXBA2508	0-600 psi/Bar	PSXBA2608	0-600 psi/kPa	PSXBA2708
	0-1000	PSXBA2509	0-1000 psi/Bar	PSXBA2609	0-1000 psi/kPa	PSXBA2709
	0-1500	PSXBA2510	0-1500 psi/Bar	PSXBA2610	0-1500 psi/kPa	PSXBA2710
	0-2000	PSXBA2511	0-2000 psi/Bar	PSXBA2611	0-2000 psi/kPa	PSXBA2711
	0-3000	PSXBA2512	0-3000 psi/Bar	PSXBA2612	0-3000 psi/kPa	PSXBA2712
	0-5000	PSXBA2513	0-5000 psi/Bar	PSXBA2613	0-5000 psi/kPa	PSXBA2713
	0-10000	PSXBA2514	0-10000 psi/Bar	PSXBA2614	0-10000 psi/kPa	PSXBA2714

Order Codes:

4" Dial, SS internals, 1/4" NPT Bottom connection, Shock-X™ movement, Bayonet Ring P = Pressure Gauge S = 316 Stainless Steel X = Shock-X™ Movement B = 4" Dial 2 = 1/4" NPT 100 Codes - psi only 200 Codes - psi/Bar 300 Codes - psi/kPa	PSI Ranges	Code	PSI/Bar Ranges	Code	PSI/kPa Ranges	Code
	Vacuum	PSXB2100	Vacuum/Bar	PSXB2200	Vacuum	PSXB2300
	0-15	PSXB2101	0-15 psi/Bar	PSXB2201	0-15 psi/kPa	PSXB2301
	0-30	PSXB2102	0-30 psi/Bar	PSXB2202	0-30 psi/kPa	PSXB2302
	0-60	PSXB2103	0-60 psi/Bar	PSXB2203	0-60 psi/kPa	PSXB2303
	0-100	PSXB2104	0-100 psi/Bar	PSXB2204	0-100 psi/kPa	PSXB2304
	0-160	PSXB2105	0-160 psi/Bar	PSXB2205	0-160 psi/kPa	PSXB2305
	0-200	PSXB2106	0-200 psi/Bar	PSXB2206	0-200 psi/kPa	PSXB2306
	0-300	PSXB2107	0-300 psi/Bar	PSXB2207	0-300 psi/kPa	PSXB2307
	0-600	PSXB2108	0-600 psi/Bar	PSXB2208	0-600 psi/kPa	PSXB2308
0-1000	PSXB2109	0-1000 psi/Bar	PSXB2209	0-1000 psi/kPa	PSXB2309	

Ditto except 1/2" NPT Bottom connection P = Pressure Gauge S = 316 Stainless Steel X = Shock-X™ Movement B = 4" Dial 3 = 1/2" NPT 100 Codes - psi only 200 Codes - psi/Bar 300 Codes - psi/kPa	PSI Ranges	Code	PSI/Bar Ranges	Code	PSI/kPa Ranges	Code
	Vacuum	PSXB3100	Vacuum/Bar	PSXB3200	Vacuum	PSXB3300
	0-15	PSXB3101	0-15 psi/Bar	PSXB3201	0-15 psi/kPa	PSXB3301
	0-30	PSXB3102	0-30 psi/Bar	PSXB3202	0-30 psi/kPa	PSXB3302
	0-60	PSXB3103	0-60 psi/Bar	PSXB3203	0-60 psi/kPa	PSXB3303
	0-100	PSXB3104	0-100 psi/Bar	PSXB3204	0-100 psi/kPa	PSXB3304
	0-160	PSXB3105	0-160 psi/Bar	PSXB3205	0-160 psi/kPa	PSXB3305
	0-200	PSXB3106	0-200 psi/Bar	PSXB3206	0-200 psi/kPa	PSXB3306
	0-300	PSXB3107	0-300 psi/Bar	PSXB3207	0-300 psi/kPa	PSXB3307
	0-600	PSXB3108	0-600 psi/Bar	PSXB3208	0-600 psi/kPa	PSXB3308
	0-1000	PSXB3109	0-1000 psi/Bar	PSXB3209	0-1000 psi/kPa	PSXB3309
	0-1500	PSXB3110	0-1500 psi/Bar	PSXB3210	0-1500 psi/kPa	PSXB3310
	0-2000	PSXB3111	0-2000 psi/Bar	PSXB3211	0-2000 psi/kPa	PSXB3311
	0-3000	PSXB3112	0-3000 psi/Bar	PSXB3212	0-3000 psi/kPa	PSXB3312
	0-5000	PSXB3113	0-5000 psi/Bar	PSXB3213	0-5000 psi/kPa	PSXB3313
	0-10000	PSXB3114	0-10000 psi/Bar	PSXB3214	0-10000 psi/kPa	PSXB3314
	0-15000	PSXB3115	0-15000 psi/Bar	PSXB3215	0-15000 psi/kPa	PSXB3315
0-20000	PSXB3116	0-20000 psi/Bar	PSXB3216	0-20000 psi/kPa	PSXB3316	

PSS SERIES ALL STAINLESS STEEL LIQUID FILLED PRESSURE GAUGE

Description & Features:

- All stainless steel pressure gauge with glycerin filling to prevent pointer flutter & damage caused by vibration.
- Suitable for applications where vibration is present and glycerin filling is required to dampen the movement and pointer to prevent possible damage to the movement & minimize pointer flutter for better readability.
- Available dry (no glycerin) or glycerin filled.
- Other options available upon request.
- Lens: Polycarbonate (PC) standard. Laminated safety glass available.
- 7-year warranty*



Specifications:

- Dial Sizes: 2.5" and 4" dial sizes standard, other sizes available upon request.
- Dial Material: Aluminum with black markings (single scale) or black and red markings (dual scale).
- Case: 304 Stainless Steel standard. Optional 316 Stainless Steel case and ring available.
- Tube and Socket: All 316L Stainless Steel bourdon tube and socket.
- Lens: Polycarbonate (PC). Laminated safety glass available upon request.
- Connection Size: 1/4" NPT standard on 2.5" dial sizes, 1/2" NPT available on all 4" and larger dial sizes. BSP, BSPT and other optional threads available.
- Enclosure Rating: IP66/NEMA 4X.
- Accuracy: +/-1.6% FSA for 2.5" dial, +/-1% FSA for 4" and larger dial sizes.
- Recommended Maximum Operating Pressure: 60% of full-scale range.
- Operating Process Temperature: -4/150F, -20/65 C.
- Ambient Temperature: -4/150 F, -20/65 C when filled, -40/250 F, -40/120 C when dry.
- Ranges: Available in single scale or dual scales as required. Other ranges available upon request.
- Customization: Available upon request.

*Refer to Merit Instruments warranty page for full warranty details.

Order Codes:

2.5" Bottom Connection: P = Pressure Gauge S = 316 SS internals S = Glycerine filled A = 2.5" dial 2 = 1/4" NPT 100 Codes = psi only 200 Codes = psi/bar 300 Codes = psi/kPa	PSI Ranges	Code	PSI/Bar Ranges	Code	PSI/kPa Ranges	Code
	Vacuum	PSSA2100	Vacuum/Bar	PSSA2200	Vacuum/kPa	PSSA2300
	0-15	PSSA2101	0-15 psi/Bar	PSSA2201	0-15 psi/kPa	PSSA2301
	0-30	PSSA2102	0-30 psi/Bar	PSSA2202	0-30 psi/kPa	PSSA2302
	0-60	PSSA2103	0-60 psi/Bar	PSSA2203	0-60 psi/kPa	PSSA2303
	0-100	PSSA2104	0-100 psi/Bar	PSSA2204	0-100 psi/kPa	PSSA2304
	0-160	PSSA2105	0-160 psi/Bar	PSSA2205	0-160 psi/kPa	PSSA2305
	0-200	PSSA2106	0-200 psi/Bar	PSSA2206	0-200 psi/kPa	PSSA2306
	0-300	PSSA2107	0-300 psi/Bar	PSSA2207	0-300 psi/kPa	PSSA2307
	0-600	PSSA2108	0-600 psi/Bar	PSSA2208	0-600 psi/kPa	PSSA2308
	0-1000	PSSA2109	0-1000 psi/Bar	PSSA2209	0-1000 psi/kPa	PSSA2309
	0-1500	PSSA2110	0-1500 psi/Bar	PSSA2210	0-1500 psi/kPa	PSSA2310
	0-2000	PSSA2111	0-2000 psi/Bar	PSSA2211	0-2000 psi/kPa	PSSA2311
	0-3000	PSSA2112	0-3000 psi/Bar	PSSA2212	0-3000 psi/kPa	PSSA2312
	0-5000	PSSA2113	0-5000 psi/Bar	PSSA2213	0-5000 psi/kPa	PSSA2313
0-10000	PSSA2114	0-10000 psi/Bar	PSSA2214	0-10000 psi/kPa	PSSA2314	

2.5" Back Connection: P = Pressure Gauge S = 316 SS internals S = Glycerin filled B = Back connection A = 2.5" dial 2 = 1/4" NPT 500 Codes = psi only 600 Codes = psi/bar 700 Codes = psi/kPa	PSI Ranges	Code	PSI/Bar Ranges	Code	PSI/kPa Ranges	Code
	Vacuum	PSSBA2500	Vacuum/Bar	PSSBA2600	Vacuum/kPa	PSSBA2700
	0-15	PSSBA2501	0-15 psi/Bar	PSSBA2601	0-15 psi/kPa	PSSBA2701
	0-30	PSSBA2502	0-30 psi/Bar	PSSBA2602	0-30 psi/kPa	PSSBA2702
	0-60	PSSBA2503	0-60 psi/Bar	PSSBA2603	0-60 psi/kPa	PSSBA2703
	0-100	PSSBA2504	0-100 psi/Bar	PSSBA2604	0-100 psi/kPa	PSSBA2704
	0-160	PSSBA2505	0-160 psi/Bar	PSSBA2605	0-160 psi/kPa	PSSBA2705
	0-200	PSSBA2506	0-200 psi/Bar	PSSBA2606	0-200 psi/kPa	PSSBA2706
	0-300	PSSBA2507	0-300 psi/Bar	PSSBA2607	0-300 psi/kPa	PSSBA2707
	0-600	PSSBA2508	0-600 psi/Bar	PSSBA2608	0-600 psi/kPa	PSSBA2708
	0-1000	PSSBA2509	0-1000 psi/Bar	PSSBA2609	0-1000 psi/kPa	PSSBA2709
	0-1500	PSSBA2510	0-1500 psi/Bar	PSSBA2610	0-1500 psi/kPa	PSSBA2710
	0-2000	PSSBA2511	0-2000 psi/Bar	PSSBA2611	0-2000 psi/kPa	PSSBA2711
	0-3000	PSSBA2512	0-3000 psi/Bar	PSSBA2612	0-3000 psi/kPa	PSSBA2712
	0-5000	PSSBA2513	0-5000 psi/Bar	PSSBA2613	0-5000 psi/kPa	PSSBA2713
0-10000	PSSBA2514	0-10000 psi/Bar	PSSBA2614	0-10000 psi/kPa	PSSBA2714	

Order Codes:

4" with 1/4" NPT Bottom Connection: P = Pressure Gauge S = 316 SS internals S = Glycerine filled B = 4" dial 2 = 1/4" NPT 100 Codes = psi only 200 Codes = psi/Bar 300 Codes = psi/kPa	PSI Ranges	Code	PSI/Bar Ranges	Code	PSI/kPa Ranges	Code
	Vacuum	PSSB2100	Vacuum/Bar	PSSB2200	Vacuum/kPa	PSSB2300
	0-15	PSSB2101	0-15 psi/Bar	PSSB2201	0-15 psi/kPa	PSSB2301
	0-30	PSSB2102	0-30 psi/Bar	PSSB2202	0-30 psi/kPa	PSSB2302
	0-60	PSSB2103	0-60 psi/Bar	PSSB2203	0-60 psi/kPa	PSSB2303
	0-100	PSSB2104	0-100 psi/Bar	PSSB2204	0-100 psi/kPa	PSSB2304
	0-160	PSSB2105	0-160 psi/Bar	PSSB2205	0-160 psi/kPa	PSSB2305
	0-200	PSSB2106	0-200 psi/Bar	PSSB2206	0-200 psi/kPa	PSSB2306
	0-300	PSSB2107	0-300 psi/Bar	PSSB2207	0-300 psi/kPa	PSSB2307
	0-600	PSSB2108	0-600 psi/Bar	PSSB2208	0-600 psi/kPa	PSSB2308
0-1000	PSSB2109	0-1000 psi/Bar	PSSB2209	0-1000 psi/kPa	PSSB2309	

4" with 1/2" NPT Bottom Connection: P = Pressure Gauge S = 316 SS internals S = Glycerine filled B = 4" dial 3 = 1/2" NPT 100 Codes = psi only 200 Codes = psi/bar 300 Codes = psi/kPa	PSI Ranges	Code	PSI/Bar Ranges	Code	PSI/kPa Ranges	Code
	Vacuum	PSSB3100	Vacuum/Bar	PSSB3200	Vacuum/kPa	PSSB3300
	0-15	PSSB3101	0-15 psi/Bar	PSSB3201	0-15 psi/kPa	PSSB3301
	0-30	PSSB3102	0-30 psi/Bar	PSSB3202	0-30 psi/kPa	PSSB3302
	0-60	PSSB3103	0-60 psi/Bar	PSSB3203	0-60 psi/kPa	PSSB3303
	0-100	PSSB3104	0-100 psi/Bar	PSSB3204	0-100 psi/kPa	PSSB3304
	0-160	PSSB3105	0-160 psi/Bar	PSSB3205	0-160 psi/kPa	PSSB3305
	0-200	PSSB3106	0-200 psi/Bar	PSSB3206	0-200 psi/kPa	PSSB3306
	0-300	PSSB3107	0-300 psi/Bar	PSSB3207	0-300 psi/kPa	PSSB3307
	0-600	PSSB3108	0-600 psi/Bar	PSSB3208	0-600 psi/kPa	PSSB3308
	0-1000	PSSB3109	0-1000 psi/Bar	PSSB3209	0-1000 psi/kPa	PSSB3309
	0-1500	PSSB3110	0-1500 psi/Bar	PSSB3210	0-1500 psi/kPa	PSSB3310
	0-2000	PSSB3111	0-2000 psi/Bar	PSSB3211	0-2000 psi/kPa	PSSB3311
	0-3000	PSSB3112	0-3000 psi/Bar	PSSB3212	0-3000 psi/kPa	PSSB3312
	0-5000	PSSB3113	0-5000 psi/Bar	PSSB3213	0-5000 psi/kPa	PSSB3313
	0-10000	PSSB3114	0-10000 psi/Bar	PSSB3214	0-10000 psi/kPa	PSSB3314
	0-15000	PSSB3115	0-15000 psi/Bar	PSSB3215	0-15000 psi/kPa	PSSB3315
0-20000	PSSB3116	0-20000 psi/Bar	PSSB3216	0-20000 psi/kPa	PSSB3316	

PDG SERIES DIGITAL GAUGE

Description & Features:

- 304 Stainless Steel Case and internals. • AA Battery, X3 & USB cable powered.
- 5 Digit LCD display with backlight.
- Switchable pressure range.
- On/Off, Zero, Pressure Units & Maximum Pressure Hold buttons.
- Suitable for any processes not corrosive to 304 stainless steel.
- 7-year warranty

Specifications:

- Dial Size: 4"
- Display: 5-unit LCD with backlight.
- Case: 304 stainless steel
- Socket: 304 stainless steel
- Sample Frequency: 5 times per second.
- Accuracy: +/-0.4% of scale.
- Operating Temperature: -10/50 C, +14/122 F
- Connection Size: 1/4" NPT or 1/2" NPT with other connections available upon request.
- Overrange: 120% of full scale.
- Pressure Units: Bar, psi, kg/cm², MPa and kPa (switchable)

*Refer to Merit Instruments warranty page for full warranty details.



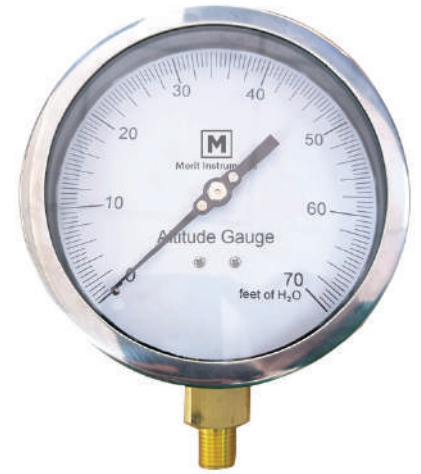
Sizes, Code & Ranges:

	4" Dial Ranges	Code
Dial Size: 4" Display: 5-unit LCD with backlight. Case: 304 stainless steel Socket: 304 stainless steel Sample Frequency: 3 times per second. Accuracy: +/-0.4% of scale	0/2 Bar	PDG400
	0/6 Bar	PDG401
	0/10 Bar	PDG402
	0/16 Bar	PDG403
	0/100 Bar	PDG404
	0/250 Bar	PDG405
	0/400 Bar	PDG406
	0/600 Bar	PDG407

PSC SERIES ALTITUDE GAUGE

Description & Features:

- Durable 4.5" dial aluminum case with polished 304 SS ring, glass lens and brass internals.
- Suitable for multiple industrial applications for measuring liquid levels in tanks.
- Other options available upon request.
- 7-year warranty*



Specifications:

- Dial Size: 4.5" dial.
- Dial Material: Aluminum with black markings.
- Case: Aluminum painted black.
- Tube and Socket: Phosphor Bronze and Brass.
- Lens: Glass.
- Connection Size: 1/4" NPT standard.
- Enclosure Rating: IP52
- Accuracy: +/-0.5% FSA.
- Recommended Maximum
- Operating Pressure: 60% of full-scale range. Operating Process Temperature: -40/150F, -40/65 C.
- Ambient Temperature: -40/150 F, -40/65 C.

Order Codes:

	Range	Code
Dial Size: 4.5" dial. Dial Material: Aluminum with black markings. Case: Aluminum painted black. Tube and Socket: Phosphor bronze and Brass. Lens: Glass. Connection Size: 1/4" NPT standard.	0/70 Feet of Water	PSCALT101
	0/140 Feet of Water	PSCALT102
	0/230 Feet of Water	PSCALT103
	0/370 Feet of Water	PSCALT104
	0/460 Feet of Water	PSCALT105
	0/690 Feet of Water	PSCALT106

*Refer to Merit Instruments warranty page for full warranty details.

TRT SERIES REMOTE READING GAS ACTUATED THERMOMETERS

Description & Features:

- Custom manufactured stainless steel thermometers for measuring temperatures remotely.
- Available in 2.5", 4" and 6" dial sizes in back or bottom connection.
- Temperature ranges available in single scale (F only, C only) or dual scale (F&C).
- Made from durable 304 stainless steel standard.
- 7-Year warranty*
- **Refer to Merit Instruments warranty page for full warranty details.*



Specifications:

- Dial Size: 2.5" (63mm), 4" (100mm) and 6" (150mm) dial sizes are standard. Other sizes available upon request.
- Connection Location: Bottom or Back connection available.
- Dial: Aluminum.
- Case: 304 stainless steel case and.
- Case Mounting: 304 SS Back Flange standard on bottom connection, 304 SS Front Flange or 304 SS U-Clamp available on back connection thermometers.
- Lens: Polycarbonate (PC) standard, laminated safety glass available.
- Ring: 304 stainless steel.
- Capillary: 304 stainless steel, seamless. Standard lengths start at 5' and are available up to 15'. Longer capillary lengths available upon request.
- Armour: 304 stainless steel.
- Sensing Bulb: 1/2" OD x 6" long 304 stainless steel standard, 316 stainless steel optional. Other sensing bulb sizes available upon request.
- Connection: Plain bulb (no connection) standard. 1/2" NPT or 3/4" NPT 316 stainless steel union connection or thermowell available.
- Fill Media: Gas – allows for a linear temperature scale unlike vapor filling which is non-linear.
- Accuracy: +/- 1% of full-scale value.
- Note: Merit recommends an ambient temperature of 74 F (23 C) when using this thermometer. Significantly higher or lower ambient temperatures may negatively impact the accuracy of the thermometer reading.



Applications:

- For any application requiring a remote temperature reading where the dial (temperature reading) is mounted away from the process media such as in tanks, difficult to reach process areas, different rooms, etc.
- Can be customized to meet OEM requirements.

TRT SERIES ORDER CODES

ITEM	DESCRIPTION	CODE
Dial Size	2.0"	A
	2.5"	B
	4.0"	C
	6.0"	D
Capillary Location	Bottom	A
	Back	B
Mounting Option (back flange standard on bottom connection thermometers).	Back Flange	1F
	Front Flange	2F
	U-Clamp	3F
Capillary Length	5 Feet	5
	10 Feet	10
	15 Feet	15
Bulb Type	304 SS	S
	316 SS	C
Connection Type	Plain	PC
	1/2" NPT 316 SS Union	1U
	3/4" NPT 316 SS Union	2U
	1/2" NPT 316 SS Thermowell	1T
	3/4" NPT 316 SS Thermowell	2T

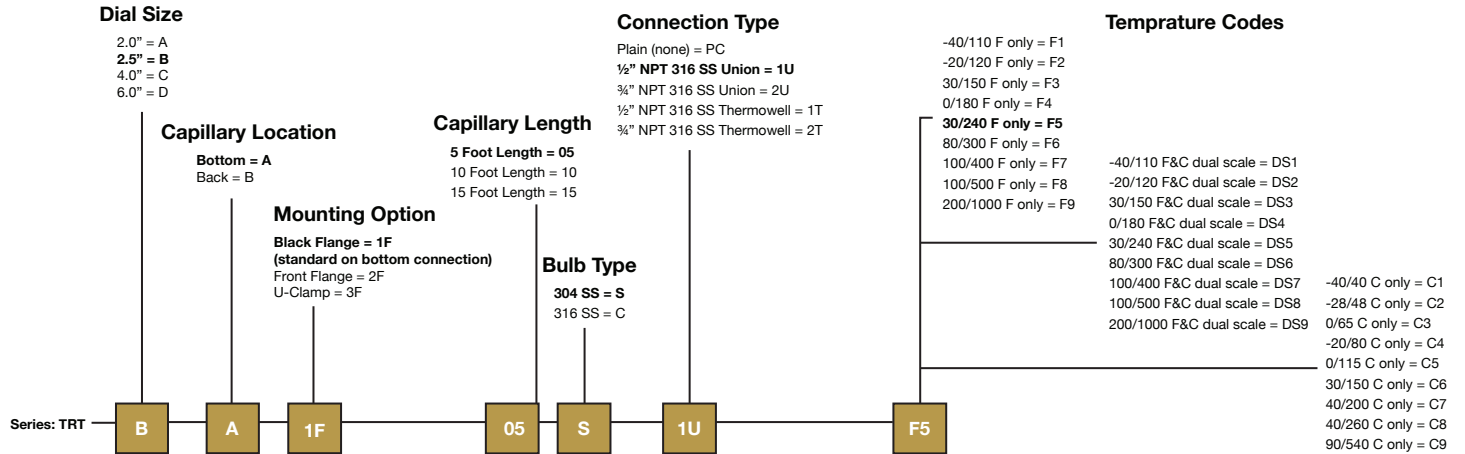
TEMPERATURE CODES

F Only Single Scale	Code	F&C Dual Scale	Code	C Only Single Scale	Code
-40/110 F	F1	-40/110 F&C	DS1	-40/40 C	C1
-20/120 F	F2	-20/120 F&C	DS2	-28/48 C	C2
30/150 F	F3	30/150 F&C	DS3	0/65 C	C3
0/180 F	F4	0/180 F&C	DS4	-20/80 C	C4
30/240 F	F5	30/240 F&C	DS5	0/115 C	C5
80/300 F	F6	80/300 F&C	DS6	30/150 C	C6
100/400 F	F7	100/400 F&C	DS7	40/200 C	C7
100/500 F	F8	100/500 F&C	DS8	40/260 C	C8
200/1000 F	F9	200/1000 F&C	DS9	90/540 C	C9

How to order:

Select 1 item from each of the options on the previous page such as for the following example:

For a 2.5" dial bottom connection thermometer with back flange, 5 ' of capillary, 304 SS bulb with 1/2" NPT 316 SS union, range 30/240 F only, single scale: **TRTBA1F05S1UF5**





Merit Instruments



MERIT INSTRUMENTS
6500 River Place Boulevard
Building 7, Suite 250
Austin, Texas 78730
USA